



SPINAL INJURIES SCOTLAND

Clober Farm Project Milngavie



Spinal Injuries Scotland is the national voluntary organisation concerned with new and long-term spinal cord injured people, their relatives and friends, along with those involved in the management, care and rehabilitation of the injury.

Project Outline

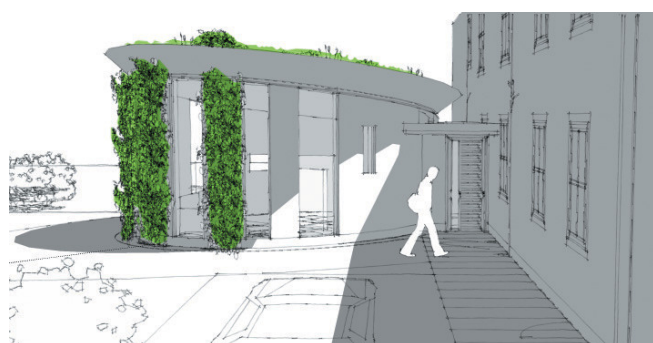
When an individual suffers a spinal cord injury, their rehabilitation can take anywhere from 6 to 12 months in a dedicated spinal injuries unit. Many will then have to buy or rent purpose built accommodation, others will have to significantly adapt an existing property. Without any prior knowledge of accessible housing, these options can be extremely challenging and time-consuming. It's common for many to find themselves with a poorly adapted solution or spending long periods of time in temporary accommodation.



The ground floor of Grade C listed Clober Farm in Milngavie was bequeathed to Spinal Injuries Scotland in 2007. Forming part of a 280 year old farmhouse and including an extensive garden, SIS has identified huge potential in the property and plans to convert it for use as accessible accommodation for those with spinal cord injuries. In doing so, they aim to showcase a fresh approach to creating and retrofitting an existing property into a fully accessible home.

Combining thoughtful redesign of the interior with the addition of a modern extension, and the creation of an accessible garden, the property will be a centre of excellence in accessible design. The property will not appear to have been adapted for the disabled, instead, accessibility has been included in the design from the outset.

This unique project will be the first of its kind, offering design ideas and inspiration to all involved in the creation of accessible accommodation: Architects, planners, local authorities and individuals will be able to see accessible design at its best

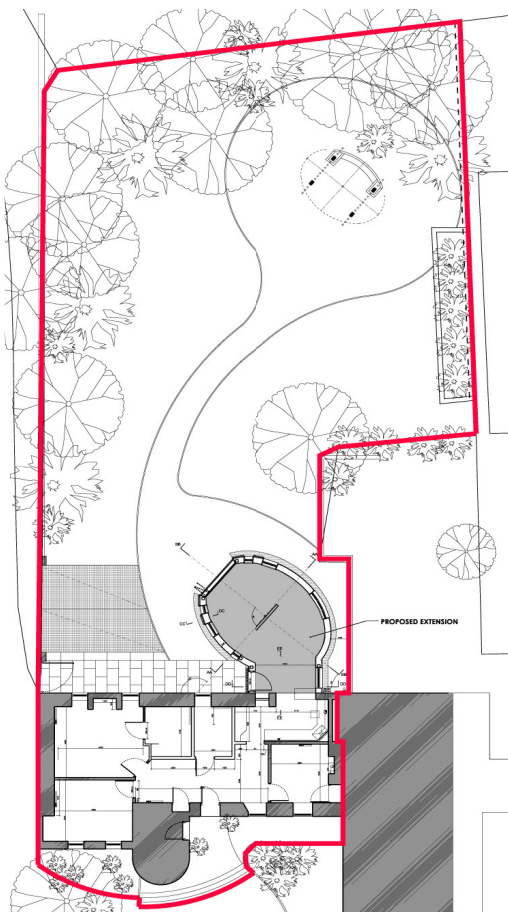


For those with a recent spinal injury, Clober Farm will offer high quality accessible accommodation. It will provide a break from the strenuous process of rehabilitation and a chance to see what life will be like when they finally leave hospital, a chance to spend time with their families out with a healthcare setting.

The Design



Although the plans maintain the 3 bedroom capacity, we have decided to extend the volume of the living space to the rear of the property. This new “green roofed” extension will form the main living area, main entrance, and will link through the fully accessible kitchen into the existing building. Full height glazing and large folding French doors will allow users to enjoy the garden in all weathers, a welcome change from hospital.



From this extension, through the fully accessible kitchen, 3 accessible bedrooms and two bathrooms with wet floor showers, we aim to explore and present ideas that can be carried forward to future housing designs and adaptations. Designers and end users alike will be able to see the latest adaptive equipment in place. They will be able to see how existing products and techniques can be designed to provide an unobtrusive adapted environment that is suitable for everyone.

An area that most designers, house builders, and often many disabled users neglect to make fully accessible, the garden is a key component of the project. With input from experienced garden designers and spinal injured individuals, and by utilising various surfaces and features such as raised beds and lawns, we are going to create an outdoor environment that everyone can share.

